



Auto-Lock Kit

For B&D Sectional Doors.

Any other brand of doors, please consult your B&D approved distributor.

Auto-Lock Contents

GARAGE DOOR LOCK - ORDER NO. 100040		
ITEM	DESCRIPTION	QTY
1	GARAGE DOOR LOCK	1
2	COUNTERSUNK HEAD SCREW ZN M6 X 14	2
3	TAPTITE "P" BLACK SCREW M3 X 12	4
4	BATTERY C-LR14	2
5	WIRELESS BASESTATION MODULE	1
6	DRILLING TEMPLATE LABEL	1



WARNING! Ensure the opener is not engaged when the Auto-lock is being used with only the bolt unit. Failure to do so may void the warranty of the opener.



CAUTION: Ensure bolt on Auto-lock is free to move during limit setup.

Bracket Kit (Kit sold separately)

DOOR BRACKET KITS		
ITEM	STRIKER BRACKET FOR DOOR:	KIT
7	PANELIFT, PANELIFT GEN II, PANELIFT ICON, PANELMASTA, FIRMAPANEL, P7, DESIGN-A-DOOR, FLUSHMOUNT, ENVIROPANEL, SMOOTHPANEL & TOUGHPANEL	MC0104
8	STORMSHIELD	MC0105
9	TONGUE AND GROOVE	MC0106
FASTENER PACK		
ITEM	DESCRIPTION	QTY
10	FLANGE HEAD TEK SCREWS 20 X 25 CL4	4
11	MUSHROOM HEAD BOLTS 1/4" - 20 X 1/2"	3
12	FLANGE NUT 1/4"	3



WARNING! This lock has been designed to work with B&D sectional overhead garage doors.

If you fit this lock to other branded garage door, we cannot guarantee the performance of the lock and any performance warranties will not apply. This is subject to any Statutory Guarantees that may apply. Please refer to our warranty terms and conditions set out in the Openers Manual.



This device will slide a bolt into the guide track automatically when the door is closed. **DO NOT** install in garages that have only one exit.

For emergency lock / unlock press the lock / unlock button on the Auto-Lock. This will disengage the lock from the guide track and allow you to disengage the opener and open the door. The lock will automatically re-engage after the next complete cycle.



It is our strong recommendation that your opener be fitted with **SAFETY BEAMS**.

Safety Beams detect any obstructions in the door / gate's path and override automatic operation if one presents. These must be installed as in accordance with AS/NZS 60335-2-95:2020.

Important Safety Instructions



WARNING!

- DO NOT attempt to disassemble, repair or modify the product. This will invalidate the warranty.
- DO NOT allow children to play with the Auto-Lock.
- DO NOT install in garages that have only one exit.
- DO NOT cover, paint or lubricate the product.



CAUTION:

Burns

- DO NOT handle damaged or leaking batteries
- The Auto-Lock Kit contains sealed lead-acid batteries that must be disposed of properly at the end of their useful life.

Muscle strain

- DO NOT attempt to lift the door manually when the Auto-lock is engaged.



prior to installation

Preparation - setting the door limits

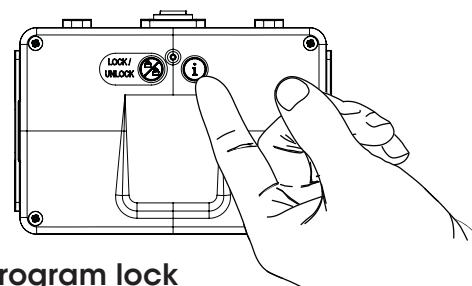
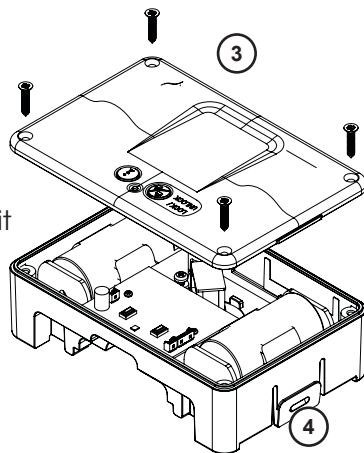
Ensure the door limits have been set on the opener, prior to installing the Auto-lock. Refer to the opener manual for instructions.



WARNING! remove all manual locking systems prior to installing lock. Any damage as a result of a manual lock will void the warranty for the door, Auto-lock and opener.

install batteries

- Insert batteries (4) into drive unit.
- Place cover back on drive unit and secure with 4 x screws (3).

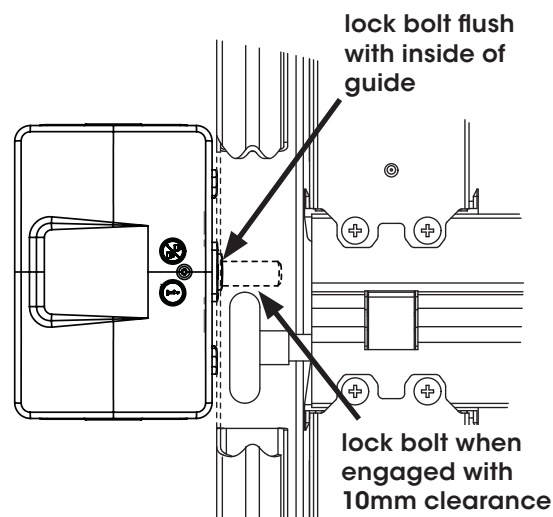
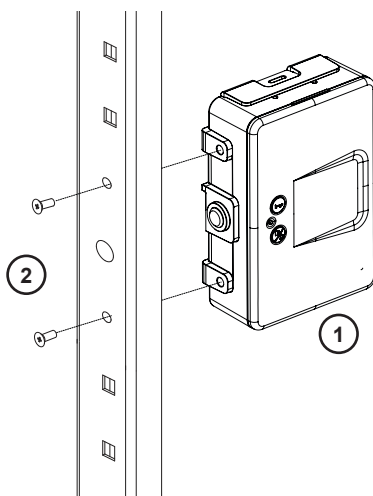
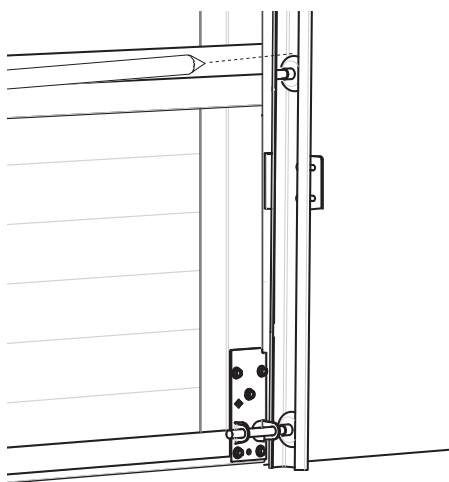


program lock

- Press and hold the info button (i) on drive unit until the light goes red.
- Then press the lock/unlock button to test the drive unit.

standard installation (side mount)

preparation - no brackets, mounting on track



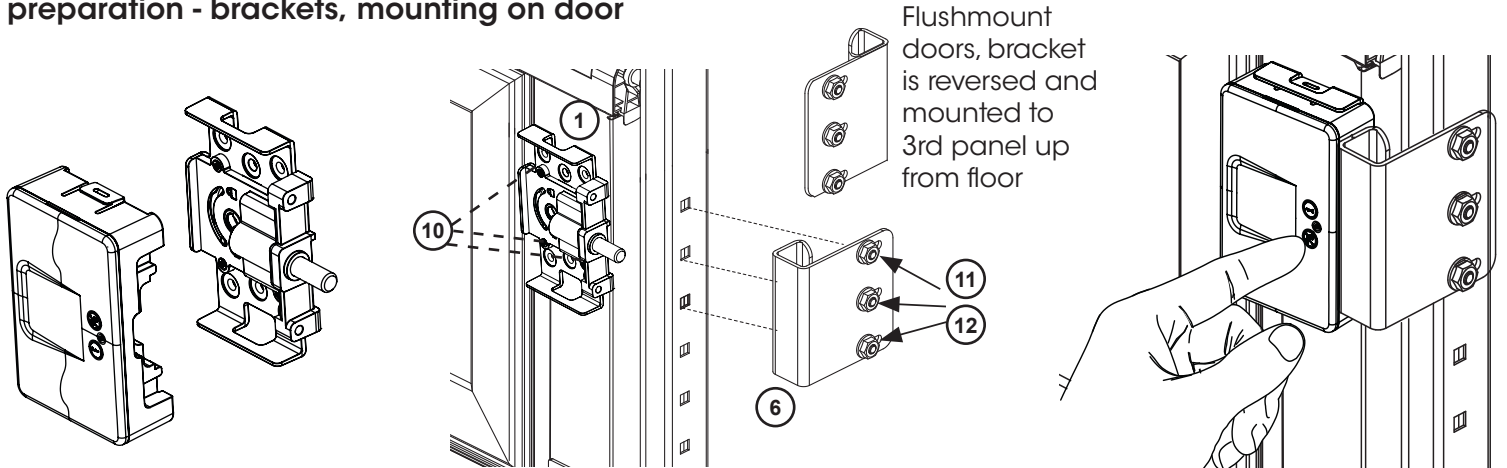
- With the door closed, mark the position of the top of the second door wheel on the inside of the track.
- Place the drilling template (6) label with the Datum line on top of the line marked inside.
- Using an 6mm and 18mm stepped drill, drill marked holes through the guide and remove any burrs from holes.
- Assemble the Autolock (1) to the track using 2 x screws (2).

- Close the door and check the position of the lock to the wheel, there should be a 10mm clearance.
- Test the operation of the AutoLock by pressing the lock/unlock button to ensure the lock bolt fully engages through the guide without interference.

**PROCEED TO CONNECTING
BASE STATION TO THE OPENER.**

limited side room installation (door mount)

preparation - brackets, mounting on door

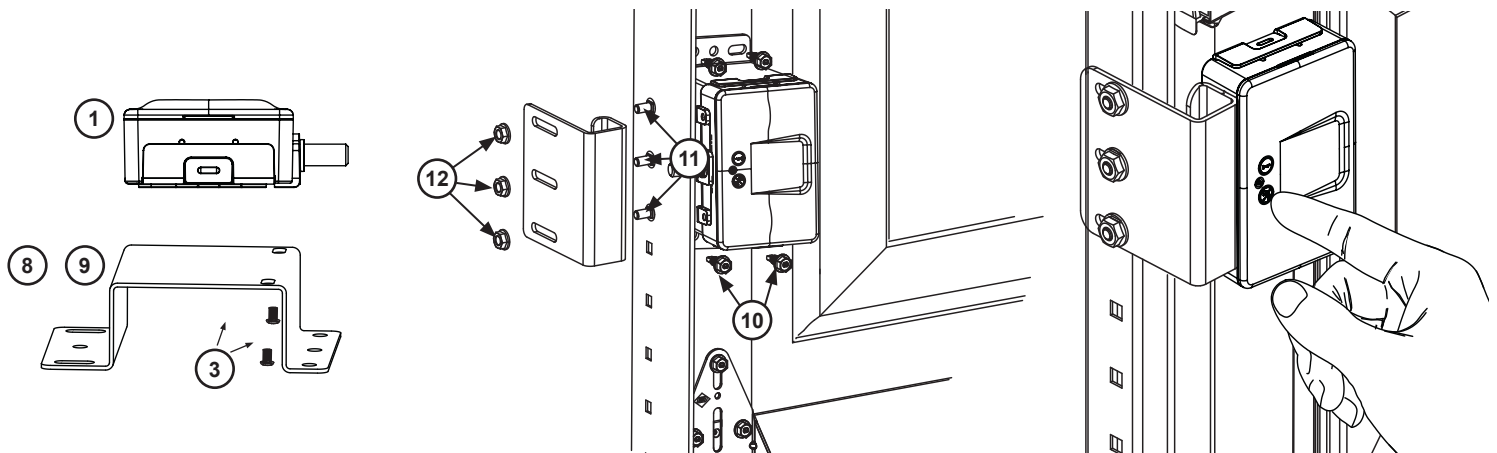


- Remove the lock drive unit from the lock mechanism by depressing the two tabs on the top and bottom of the unit and pulling apart.
- Close door and mark mounting position of both striker and lock, by holding in place.
Flushmount doors: mounted to 3rd panel up from floor.
All other doors: mounted to bottom panel.
- Open door and affix the striker bracket (6) to the track with 3 x bolts (11) and nuts (12).
- Close the door, align the lock mechanism (1) on the bottom panel door stile so that the lock bolt engages fully into the striker bracket (6) and fix using 4 x flange head tek screws (10).
- Fit the lock drive unit to the lock mechanism.
- Test the operation of the AutoLock by pressing the lock/unlock button to ensure the lock bolt fully engages the striker without interference.

PROCEED TO CONNECTING BASE STATION TO THE OPENER.

StormShield and Tongue & Groove installation (kits sold separately)

preparation - mounting on door stile

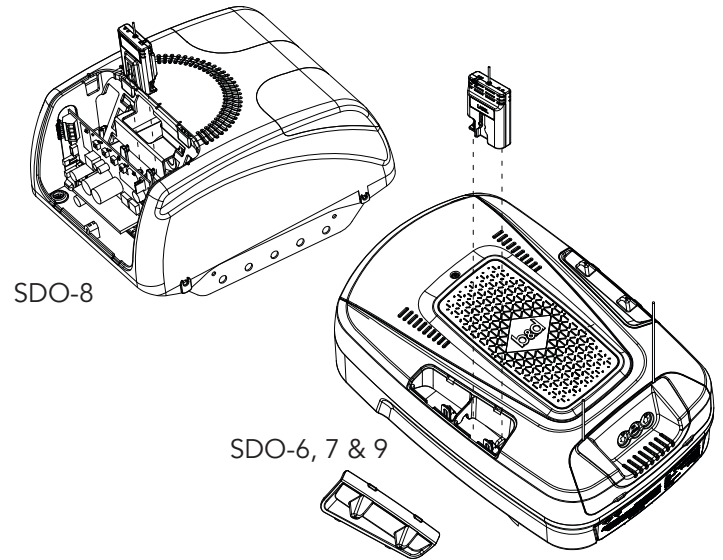


- Fit the mounting bracket (8) or (9) to the lock mechanism (1) using 2 x countersunk head screws M6 x 14 (3).
- Close the door to determine mounting position between the reinforcing braces on the bottom door panel and mark. Mount the bracket and lock mechanism as marked with the 4 flange head tek screws 20 x 25 CL4 (10), however do not fully tighten as further final adjustment may be required.
- With the door in the closed position align the striker bracket with the lock
- Drill 3 x 1/4 holes as marked in the tracklock and fix with 3 x bolts (11) and nuts (12).
- Test the operation of the AutoLock by pressing the lock/unlock button to ensure the lock bolt fully engages the striker without interference.

PROCEED TO CONNECTING BASE STATION TO THE OPENER.

connect basestation to opener

- a. Disconnect the power supply to the opener.
- b. For SDO-6, SDO-7 and SDO-9:
 - i. Remove the left hand side pocket from the opener.
 - ii. Reach inside the opener and pull out the 4 pin harness and connect to the wireless basestation module.
- For SDO-8:
 - iii. Remove back cover to expose control board.
 - iv. Reach inside the opener and pull out the 4 pin harness and connect to the wireless basestation module.
- c. Place the module into the pocket and refit the cover.
- d. Reconnect power to the opener and test operation.
- e. Upon completion of a full cycle the lock will engage into the track.



If a PE Beam is installed ensure that the channels on the basestation on each device are different. The channel on the basestation can be changed by sliding the switch in either direction.

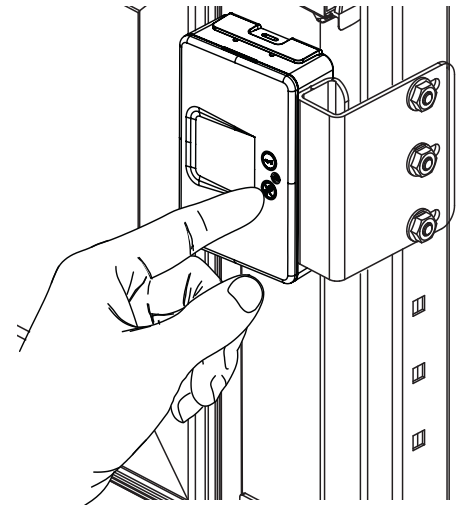
emergency operation

Press the emergency lock/unlock button on the front of the Auto-Lock to disengage the locking bolt from the guide track and allow you to disengage the opener and open the door.



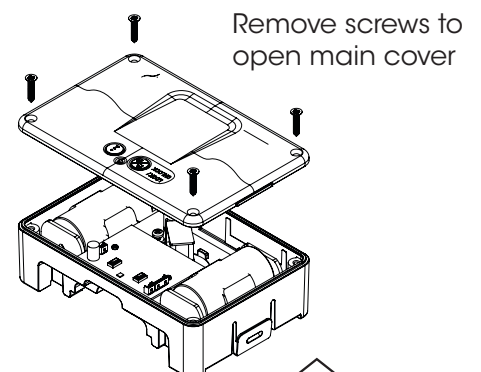
WARNING! The emergency lock/unlock button on this product is not to be used as a primary means of locking the door under normal circumstances.

The emergency lock/unlock button is to be used only in case of power outage or emergency.



battery change

- a. Replace lock batteries (2 x C-LR 14) immediately when the Auto-lock LED's red and green lights flash 3 times or are flashing slowly.
- b. Remove cover by unscrewing the four screws on the main cover.
- c. Replace batteries, refit cover and secure with screws.
- d. Operate opener to complete a full open / close cycle and ensure Auto-lock engages.



Remove screws to open main cover

led status

lock position status

The status normally displays for 10secs after lock movement / button press.

LED STATUS INDICATORS		
RED	GREEN	LOCK STATUS
FLASHING RAPIDLY		LOCKING
ON		LOCKED
	FLASHING RAPIDLY	UNLOCKING
	ON	UNLOCKED
ON	ON	ERROR
FLASHING SLOWLY	FLASHING SLOWLY	LOW BATTERY
FLASHING ALTERNATIVELY	FLASHING ALTERNATIVELY	NO LINK WITH BASESTATION

troubleshooting

problem	cause	remedy
door not moving	communication failure	switch off power to opener, the switch back on after 30 secs (If a battery backup is installed press & hold STOP/SET button on the opener until power ceases). Press the lock/ unlock button on the lock to test operation. Press the (i) button on the lock & refer to the LED status table above.
main light flashes 3 times on the opener	low battery indicator	replace the batteries as per instructions below.
door not moving and no lights on lock	limited battery power	press the (i) button on the lock to see if there is power in the battery. no lights - change battery lights - check LED status table.
main light flashing 5 times on the opener	lock is not unlocked and preventing the door moving	check lock, test by pressing emergency release button on the lock and then test door operation.
lock is not unlocking and preventing doors movement	lock jammed door wheel is pushing on the lock barrel.	remove the lock drive unit from the locking mechanism and test the manual operation of the bolt by engaging and disengaging the lock manually. check the lock barrel is not catching on the track.
red and green lights both on solid on the lock.	error with lock	press the unlock button on the lock to test operation. switch off power to opener, then switch back on after 30 secs (If a battery backup is installed press & hold STOP/SET button on the opener until power ceases). Press the lock/ unlock button on the lock to test operation. If it does not move call 13 62 63.
red and green lights on one lock flashing slowly	low battery	change battery, then test operation of lock by pressing the lock / unlock button.
red and green lights flashing alternatively	no link to opener	press the unlock button on the lock with flashing lights to disengage the bolt. Call 13 62 63 for assistance.

WARRANTY	
ACCESSORIES	1 year

Refer to our website for full warranty details;

www.bnd.com.au/repairs-service/door-warranty

If you are a consumer under the Australian Consumer Law, our goods come with guarantees that cannot be excluded under the Australian Consumer Law. You are entitled to a replacement or refund for a major failure and for compensation for any other reasonably foreseeable loss or damage. You are also entitled to have the goods repaired or replaced if the goods fail to be of acceptable quality and the failure does not amount to a major failure. This warranty certificate and other statements contained in this document or other ATA documents given to you do not exclude, restrict or modify the application of all or any of the provisions of the Australian Consumer Law.

Subject to your non-excludable rights under the Australian Consumer Law, ATA expressly excludes any liability for consequential loss, incidental or indirect damages (including but not limited to damages for loss of business profits, business interruption and loss of business information) due to a defect of the Product. In particular, any loss or damage caused to other equipment or accessories used with the product or any loss resulting from a delay in repair is excluded to the extent permitted by law.

b&d group office locations

Head Office	6-8 Fiveways Blvd, Keysborough 3173	Phone (03) 9791 0200
New South Wales	34 Marigold St, Revesby 2212	Phone (02) 9722 5555
Queensland	17 Oasis Court, Clontarf 4019	Phone (07) 3883 0200
Victoria	147-153 Canterbury Rd, Kilsyth 3137	Phone (03) 9237 7766
South Australia	23 Frederick Rd, Royal Park 5014	Phone (08) 8440 4747
Western Australia	96 Mulgul Rd, Malaga 6090	Phone (08) 9247 8777
International/Export	34 Marigold St, Revesby 2212	Phone +61 (0)2 9722 5555
New Zealand	46 Braeburn Dr, Hornby, Chch 8082	Phone +64 (0)3 384 5145

your representative is

Prefixed trademarks are the property of B&D Australia Pty Ltd. B&D Doors & Openers is a division of B&D Australia Pty Ltd. ABN 25 010 473 971. © 2016 B&D Australia Pty Ltd.

www.bnd.com.au

